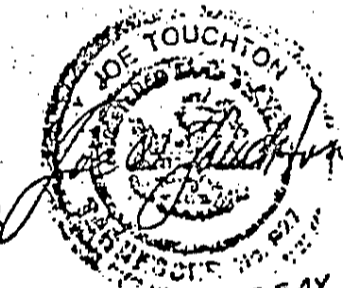
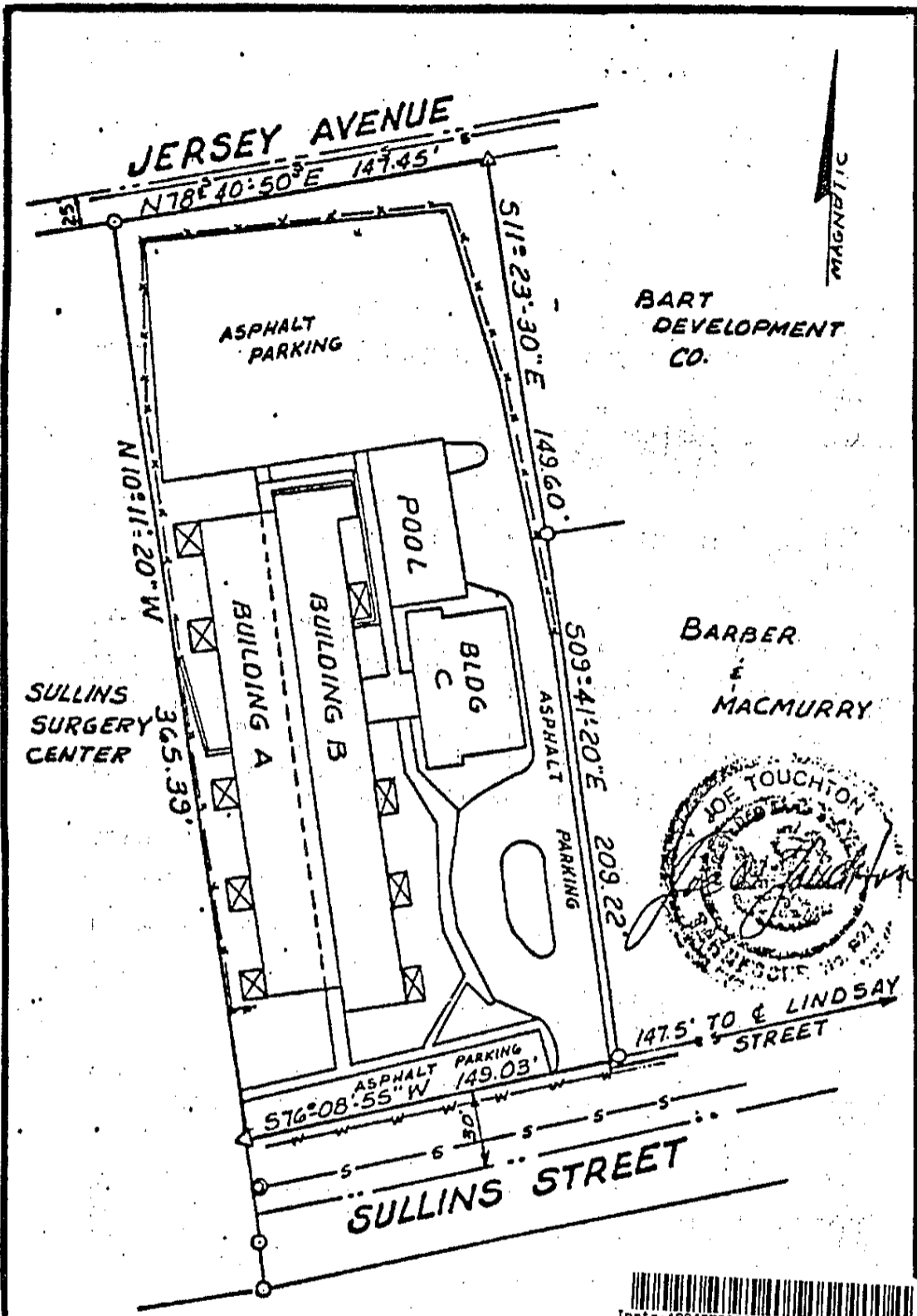


EXHIBIT "A"



INST: 6330    WB 2147    PG: 1000    07/20/1994 14:58:40

Instr: 199407200041429  
 Pages: 11 of 39  
 Back File Automation

**SITE PLAN**  
**FOR**  
**SULLINS RIDGE CONDOMINIUMS**

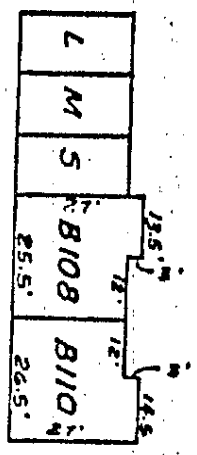
SCALE 1"=50'    SEPT 14, 1992

TOUCHTON ENG & SURVEYING Co • 214 DRUID  
 DR    KNOXVILLE, TN 37920    577-5147

Back File Automation  
Instr: 19940720041429  
Pages: 19 of 39



- L - LAUNDRY ROOM
- M - METER ROOM
- S - STORAGE ROOM



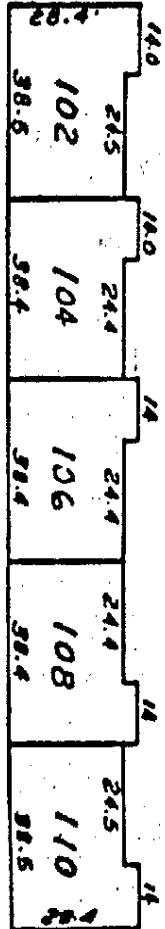
### SULLINS RIDGE CONDOMINIUMS

BUILDING A ELEVATION 94.2

SCALE 1/32" = 1'-0"

ELEVATIONS ARE BASED ON AN ASSUMED BENCHMARK

Back File Automation  
Instr: 198407200041429  
Pages: 14 of 39



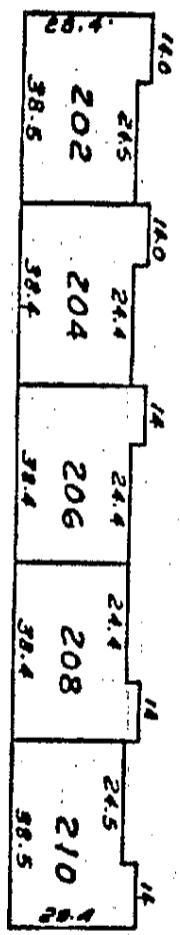
# SULLINS RIDGE CONDOMINIUMS

## BUILDING A ELEVATION 102.2

### SCALE 1/32" = 1'-0"

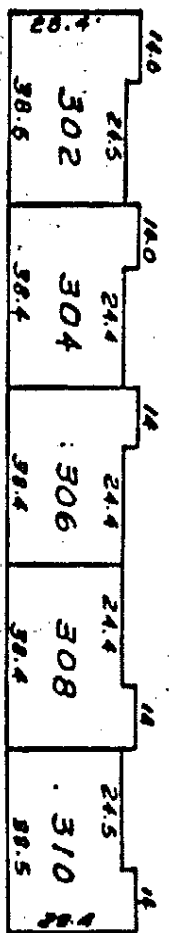
ELEVATIONS ARE BASED ON AN ASSUMED BENCHMARK

Inst: 189407200041429  
Pages: 15 of 39  
Back File Automation



**SULLINS RIDGE CONDOMINIUMS**  
**BUILDING A** ELEVATION 110.2  
SCALE 1/32" = 1'-0"  
ELEVATIONS ARE BASED ON AN ASSUMED BENCHMARK

Inst: 199407200041429  
Pages: 16 of 39  
Back File Automation



**SULLINS RIDGE CONDOMINIUMS**  
**BUILDING A** ELEVATION 1/8.2  
SCALE 1/32" = 1'-0"  
ELEVATIONS ARE BASED ON AN ASSUMED BENCHMARK

INST: 4330 WB 2147 PG: 1006 07/20/1994 14:58:40

INST: 789 WB 208 PG: 197 11/04/1992 13:11:28

Back File Automation  
 Pages: 17 of 39  
 Inst: 199407200041429



309	307	H		305	303	301
209	207	H		205	203	201
109	107	H		105	103	101
B109	B107	S	S	S	S	S

EL 126.2

EL 118.2

EL 110.2

EL 102.2

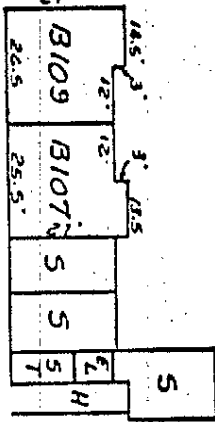
EL 94.2

**LEGEND**  
 S - STORAGE ROOM  
 ST - STAIRS  
 H - HALL

**SULLINS RIDGE CONDOMINIUMS**  
**BUILDING B LOOKING EAST**  
 SCALE 1/32" = 1'-0"  
 ELEVATIONS ARE BASED ON AN ASSUMED BENCHMARK

LEGEND  
S - STORAGE ROOM  
ST - STAIRS  
EL - ELEVATOR  
H - HALLWAY

Back File Automation  
Page: 18 of 39  
Inst: 189487200041429



SULLINS RIDGE CONDOMINIUMS  
BUILDING B ELEVATION 94.2  
SCALE 1/32" = 1'-0"  
ELEVATIONS ARE BASED ON AN ASSUMED BENCHMARK

~~INST: 7809 WB 2068 PG: 199 11/04/1992 11:11:15~~

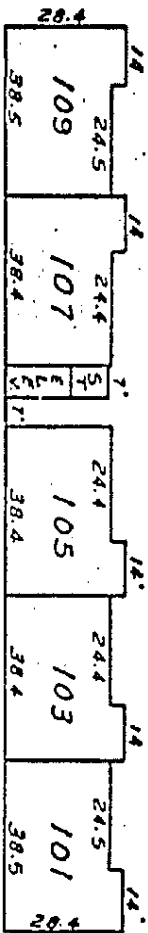
Back File Automation

Page: 19 of 39

Inst: 155407200041429



**LEGEND**  
ST - STAIRS  
ELEV. ELEVATOR



**SULLINS RIDGE CONDOMINIUMS**  
**BUILDING B ELEVATION 102.2**  
**SCALE 1/32" = 1'-0"**  
**ELEVATIONS ARE BASED ON AN ASSUMED BENCHMARK**

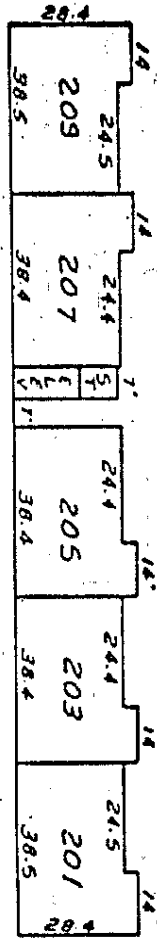
Back File Automation

Inst: 159487200241429

Page: 20 of 39



**LEGEND**  
ST - STAIRS  
ELEV. ELEVATOR



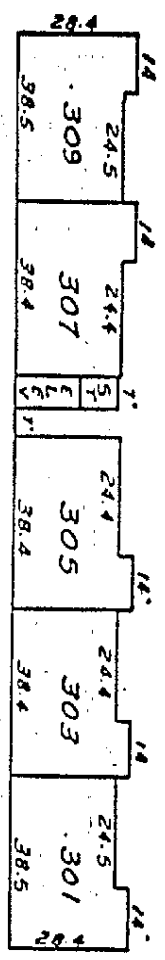
**SULLINS RIDGE CONDOMINIUMS**  
**BUILDING B ELEVATION 110.2**  
**SCALE 1/32" = 1'-0"**  
**ELEVATIONS ARE BASED ON AN ASSUMED BENCHMARK**

Back File Automation

Inst: 199407200041429  
Pages: 21 of 38



LEGEND  
ST - STAIRS  
ELEV ELEVATOR



SULLINS RIDGE CONDOMINIUMS  
BUILDING B ELEVATION 118.2  
SCALE 1/32" = 1'-0"  
ELEVATIONS ARE BASED ON AN ASSUMED BENCHMARK

EL 126.2

EL 118.2

EL 110.2

EL 102.2

.312	311
212	211
112	111

Back File Automation  
Inst: 199407200041429  
Pages: 22 of 39



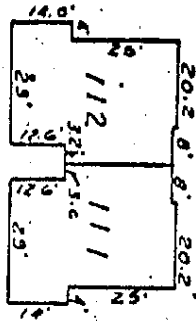
**SULLINS RIDGE CONDOMINIUMS**

**BUILDING C      LOOKING EAST**

**SCALE 1/32" = 1'-0"**

**ELEVATIONS ARE BASED ON AN ASSUMED BENCHMARK**

Inst: 199407200041429  
Pages: 23 of 39  
Back File Automation



SULLINS RIDGE CONDOMINIUMS  
BUILDING C ELEVATION 102.2  
SCALE 1/32" = 1'-0"  
ELEVATIONS ARE BASED ON AN ASSUMED BENCHMARK

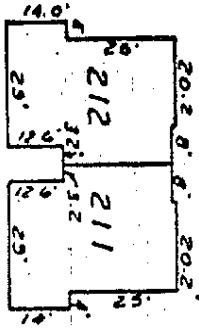
INST: 4330 WB 2147 PG: 1013 07/20/1994 14:58:40

~~INST: 2009 WB 2008 PG: 204 11/04/1992 13:11:25~~

Back File Automation

Pages: 24 of 39

Inst: 19940720041429



**SULLINS RIDGE CONDOMINIUMS**

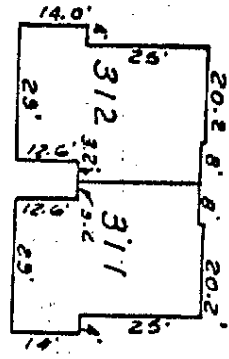
**BUILDING C ELEVATION 110.2**

**SCALE 1/32"=1'-0"**

**ELEVATIONS ARE BASED ON AN ASSUMED BENCHMARK**

Back File Automation

Inst: 199407200041429  
Pages: 25 of 39



# SULLINS RIDGE CONDOMINIUMS

## BUILDING C ELEVATION 118.2

### SCALE 1/32" = 1'-0"

ELEVATIONS ARE BASED ON AN ASSUMED BENCHMARK

FROM :

PHONE NO. :

P02

~~INST: 7809 WB 2088 PG: 206 11/04/1992 13:11:25~~

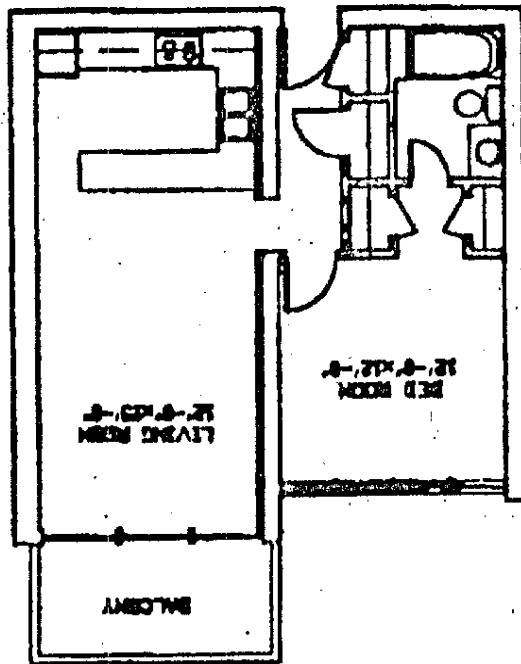
INST: 4330 WB 2147 PG: 1015 07/20/1994 14:58:40

Back File Automation  
Inst: 1940720041429  
Pages: 26 of 39



SCALE 1/8" = 1'-0"

FLOOR PLAN FOR  
UNITS 107B, 108B,  
109B AND 110B



ONE BEDROOM UNIT  
AREA: 703 S.F.

FROM :

PHONE NO. :

P01

INST: 7809 NB 2008 PG: 207 DT: 11/04/1992 13:11:25

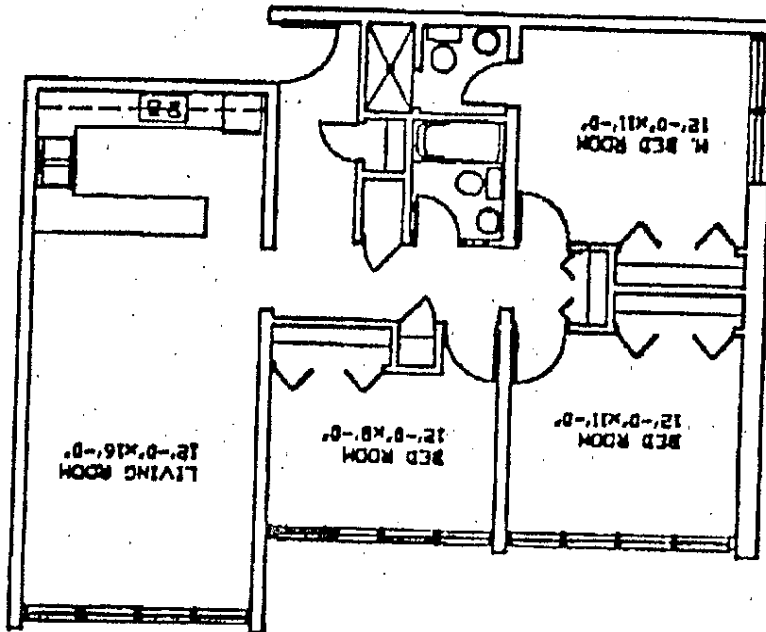
INST: 4330 NB 2147 PG: 1016 DT: 07/20/1994 14:58:40

Inst: 199407200041429  
Pages: 27 of 38  
Back File Automation

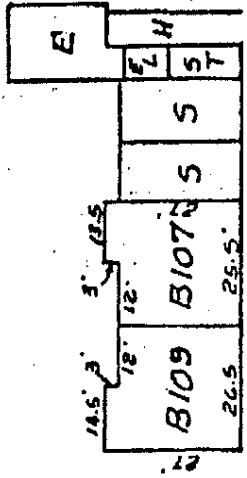


SCALE 1/8"=1'-0"

FLOOR PLAN FOR  
UNITS 111, 112, 211, 212,  
311, AND 312



THREE BEDROOM UNIT  
AREA 1097 SQ. FEET UNIT



**LEGEND**  
 S - STORAGE ROOM  
 ST - STAIRS  
 EL - ELEVATOR  
 H - HALLWAY

**SULLINS RIDGE CONDOMINIUMS**

**BUILDING B ELEVATION 94.2**

**SCALE 1/32" = 1'-0"**

**ELEVATIONS ARE BASED ON AN ASSUMED BENCHMARK**

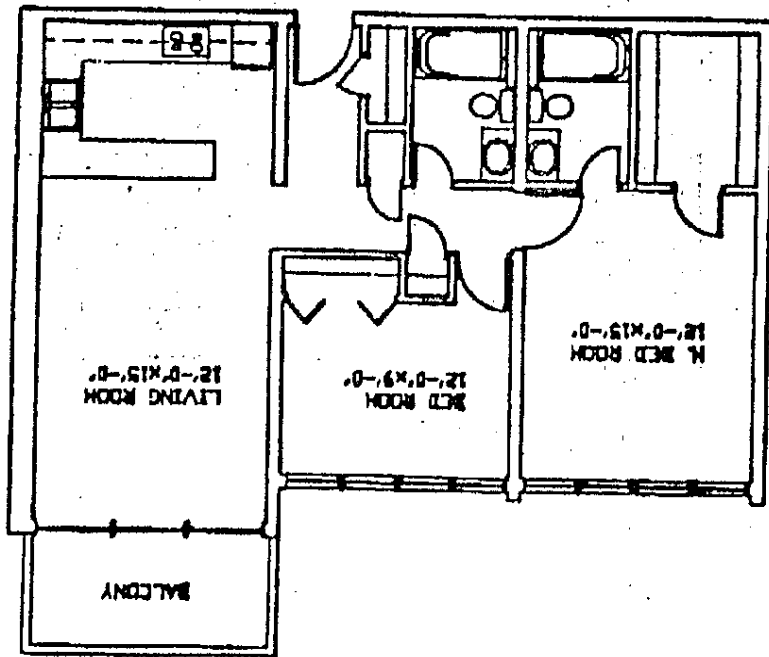
Inst: 198407200041429  
 Pages: 28 of 39  
 Back File Automation

INST: 4330 KB: 2147 PG: 1017 07/20/1994 14:58:40  
 INST: 7809 KB: 2088 PG: 208 11/04/1992 13:11:25



SCALE 1/8" = 1'-0"

FLOOR PLAN FOR UNITS  
101 THRU 110, 201 THRU 210,  
AND 301 THRU 310



TWO BEDROOM UNIT  
AREA 1008 SF. PER UNIT